



### Daily Self-Parking

Avenida North Parking Garage

Less than 1 Hour: \$6.00

Hour:

1-2 Hours: \$10.00

2-4 Hours: \$17.00

4-6 Hours: \$22.00

6-24 Hours: \$27.00

### Overnight Self-Parking

Avenida North Parking Garage

24 Hours Per \$30.00 + Taxes

Night:

(Unlimited In & Out Privileges)

*\*Any guests who choose to self-park must inform front desk. The guest key card will be enabled at Check-In to access garage.*

### Daily Valet Parking

0-2 Hours: \$20.00

2-4 Hours: \$30.00

4-6 Hours: \$35.00

6+ Hours: \$45.00

### Overnight Valet Parking

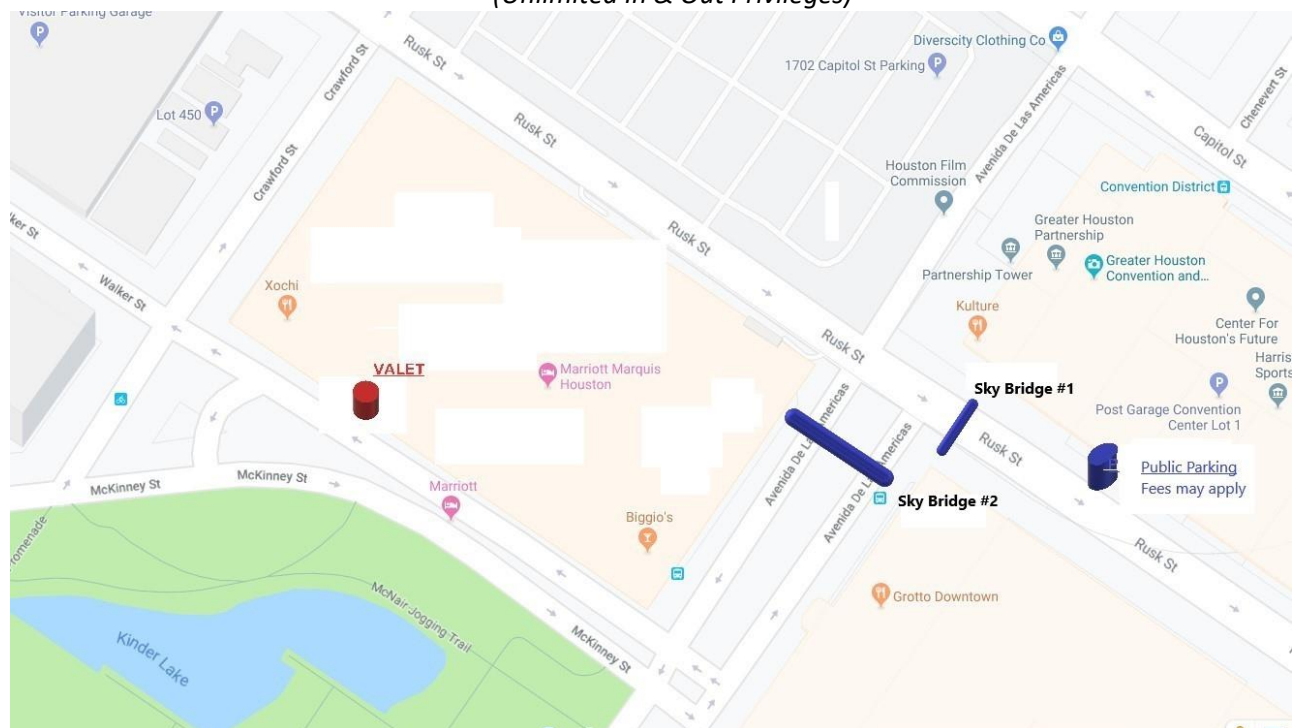
24 Hours Per \$45.00 + Taxes

Night:

Overnight \$53.00 + Taxes

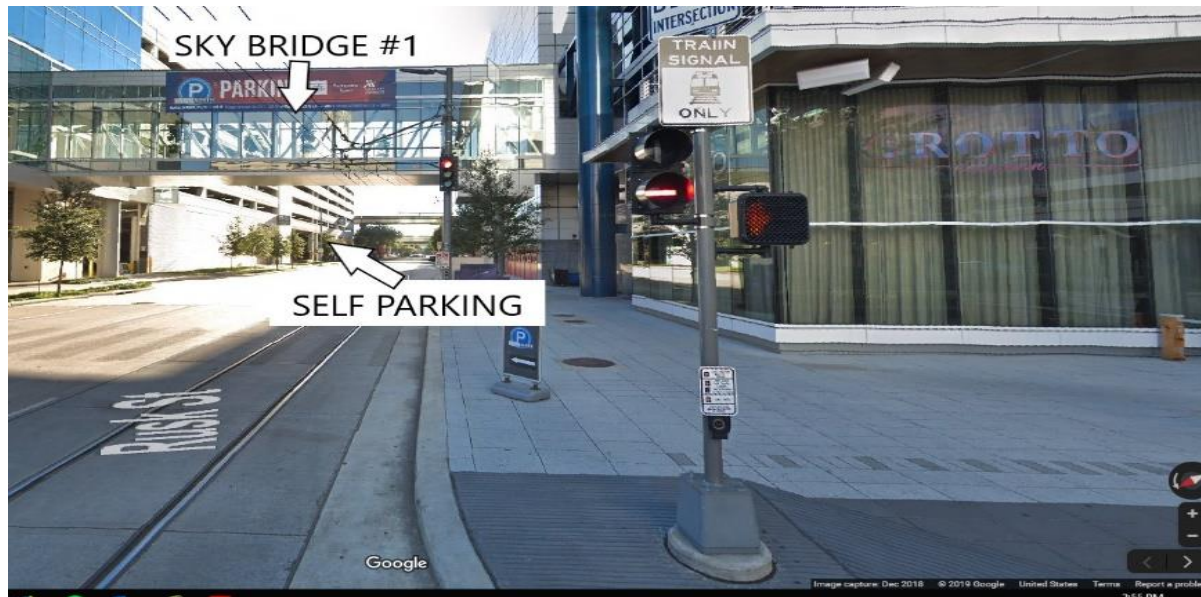
Oversized Valet

(Unlimited In & Out Privileges)

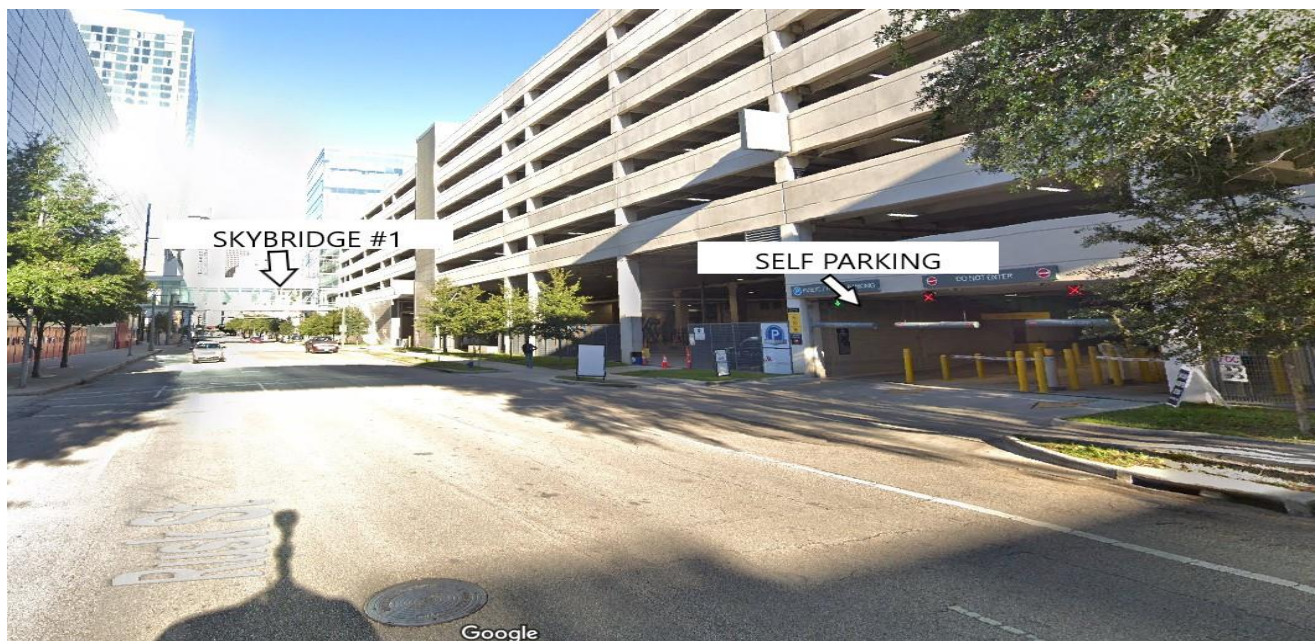


Hotel Self-Parking located in the Avenida North Parking Garage with entrances via Rusk & Capitol Streets.  
Access Hotel and Convention Center via Sky Bridge on 2nd Floor.

# SELF PARKING

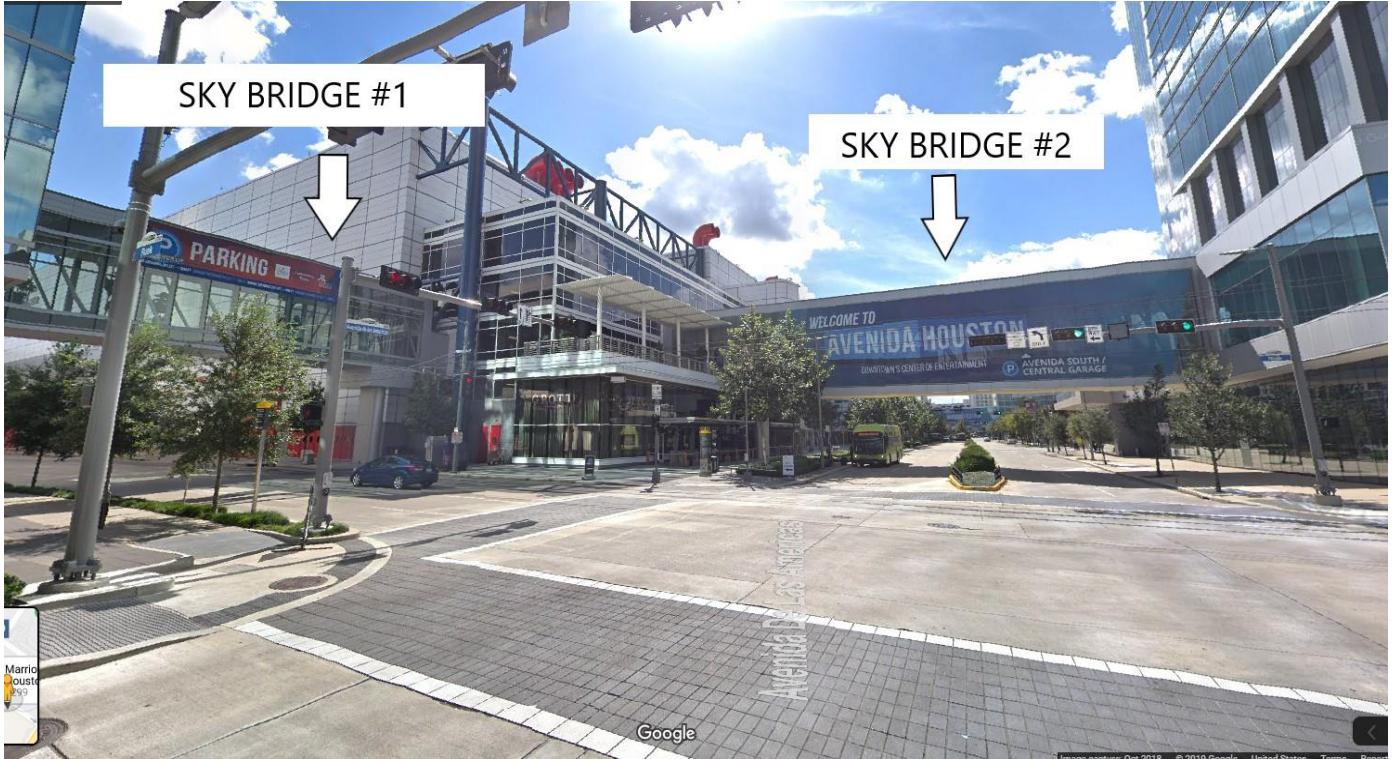


- 1) As you go down on Rusk St., towards the 69 FWY, you will pass Sky Bridge #1 (See picture above) and the entrance will be on your left. (Picture Below shows how the entrance looks.)



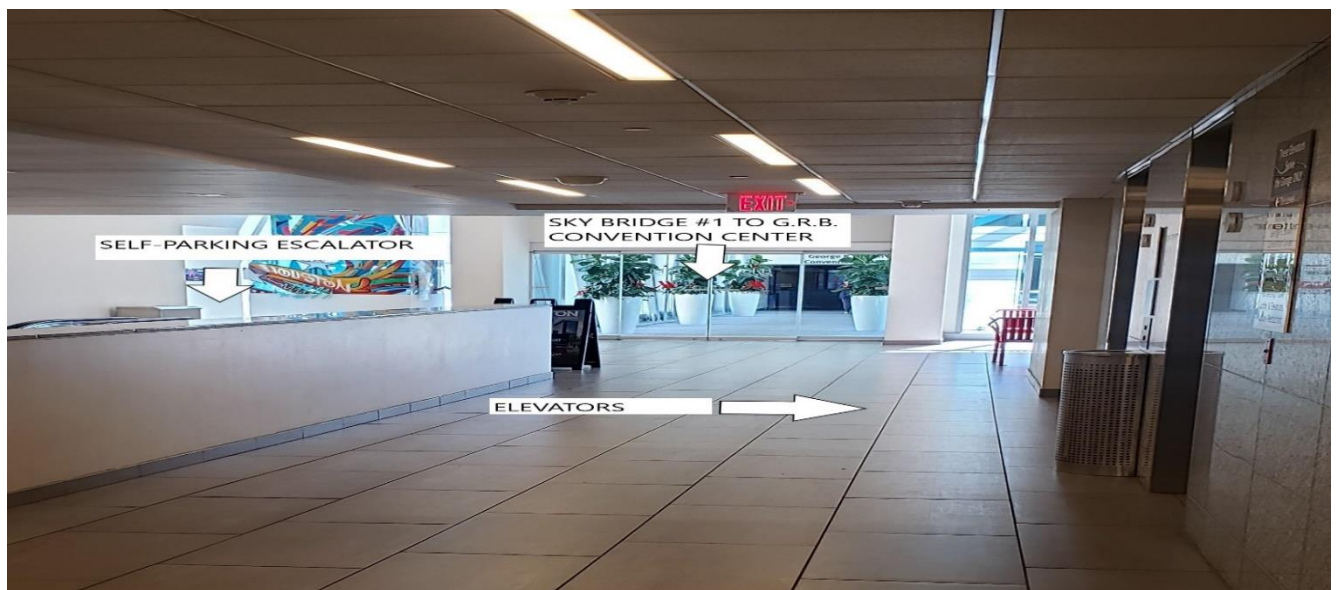


# HOTEL ACCESS



- 1) You may gain access from self-parking through Sky Bridge #1 and 2. (Picture above)
- 2) To gain access to Sky Bridge # 1, you must take the elevator, stairs, or escalator to the second floor.

The picture below, shows you the entrance of Sky Bridge #1 from the elevators and if you were to take the escalator from the 1<sup>st</sup> floor.





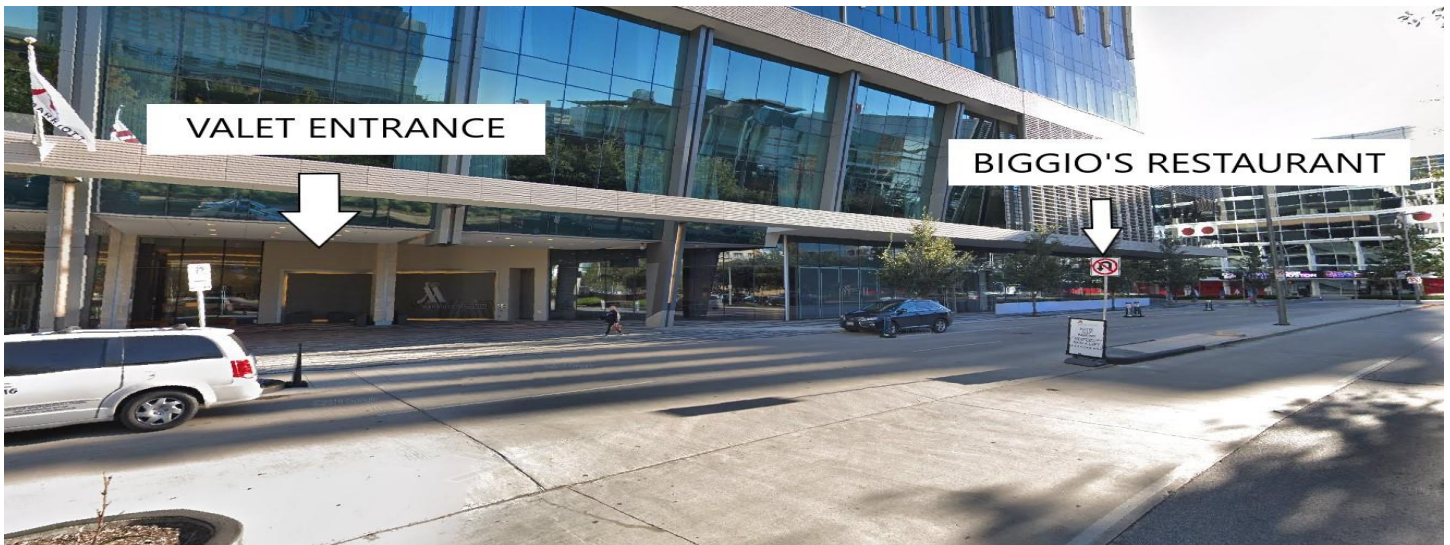


- 3) Once you have crossed Sky Bridge #1 you will have arrived to G.R.B. Convention Center.
- 4) Sky Bridge #2 will be to the right, and if you are facing Sky Bridge #2, on the right hand side you will see the Marriott Marquis logo, as shown in the above picture.
- 5) You will take the bridge and arrive on the 2<sup>nd</sup> floor of the hotel (Picture Below). Lobby will be on the 1<sup>st</sup> floor.

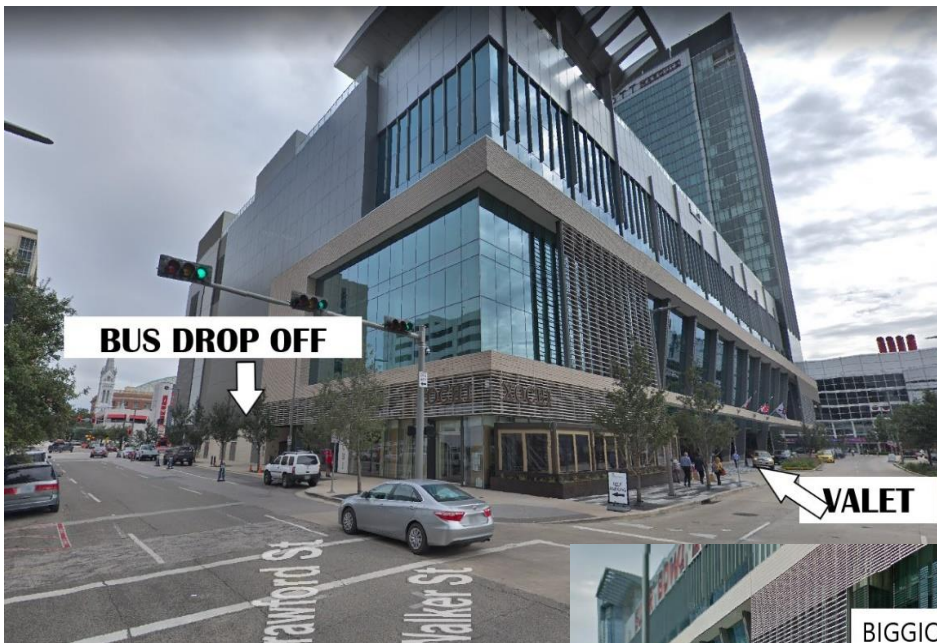




# VALET

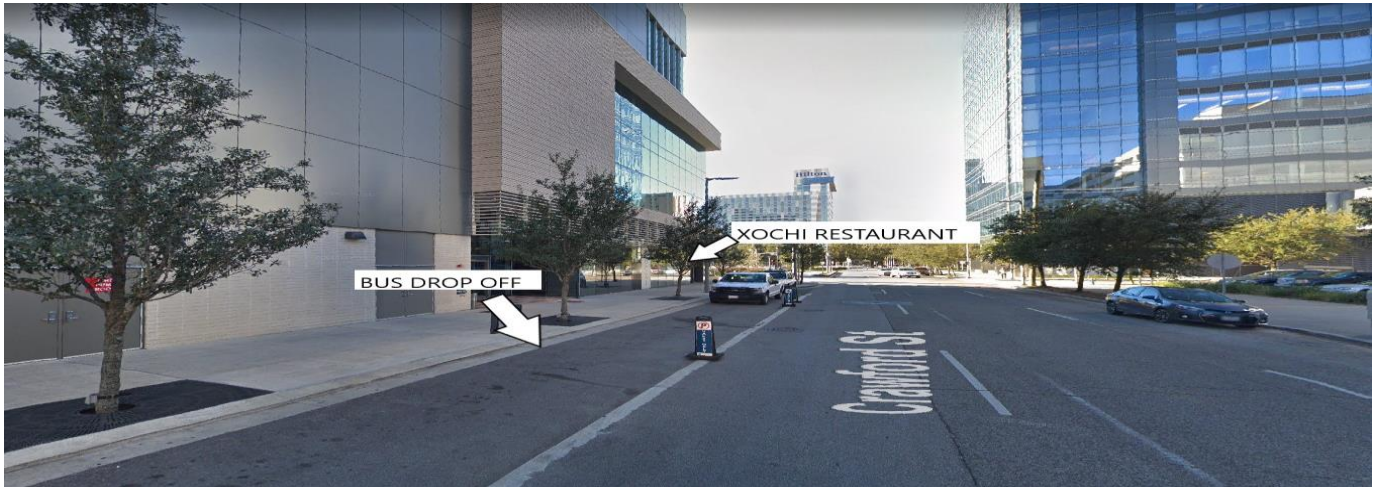


- 1) The Main entrance to the Hotel and valet may be accessed on Walker St. (Making a right), and McKinney St (Making a Left).

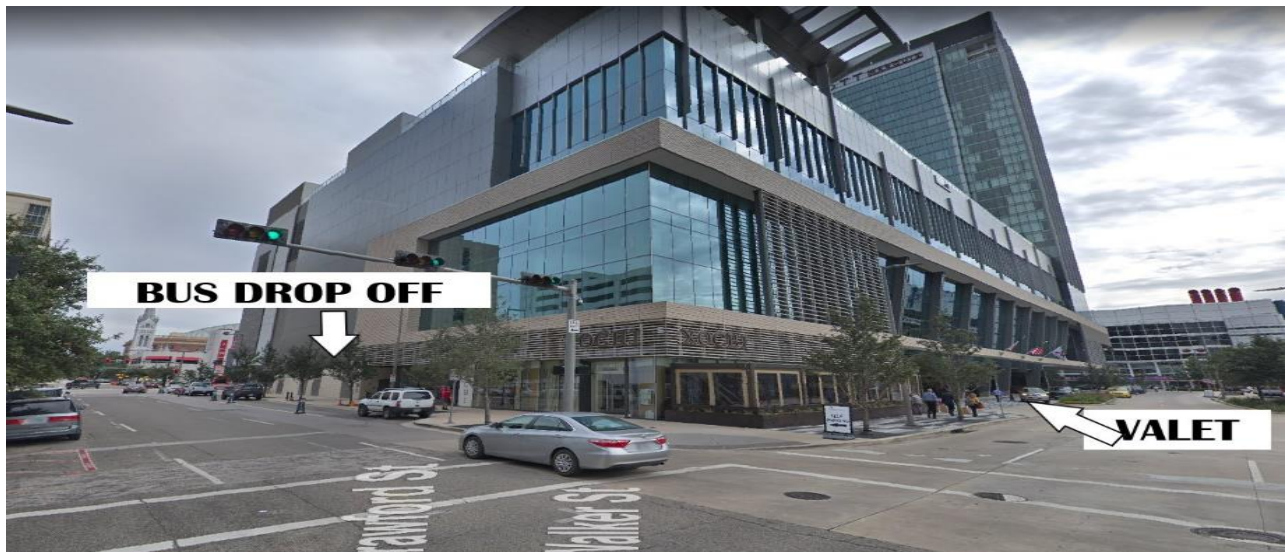




# BUS DROP OFF



- 1) The bus drop off is located on Crawford St., before Rusk St. The picture above shows you Crawford St. and Walker St.



- 2) The picture above shows location if you were on Crawford St. passing Walker St.